

LISTEN.
THINK.
SOLVE.®



Bulletin 193/592 E1 Plus PROFIBUS Side Mount Module

E1 Plus PROFIBUS Side Mount Module

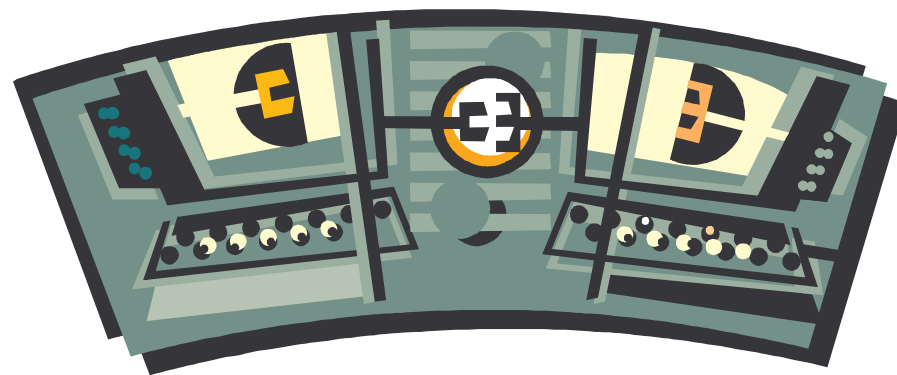
The E1 PROFIBUS Side Mount Module (193-EPRB) extends the functionality of an E1 Plus Overload Relay by providing the following functions:

- PROFIBUS Communications
- Additional I/O
- Enhanced Motor Protection



PROFIBUS Communications

- The E1 Plus PROFIBUS Side Mount Module supports the following PROFIBUS protocols
 - **DP-V0** – Messaging of I/O to a PROFIBUS Master Scanner
 - **DP-V1** – Messaging of information to a PROFIBUS Master Scanner
- Supports up to 125 nodes per network
- Supports device and network configuration via PROFIBUS
- Available Diagnostic Data
 - Average %FLA
 - %Therm Utilized
 - Trip Status
 - Warning Status
 - Device Status
 - Trip Log



Additional I/O

- The E1 Plus PROFIBUS Side Mount Module includes the following extended I/O points:
 - (2) Discrete Inputs
 - Self Powered (Internal 24 VDC)
 - (1) Discrete Output
 - Form A
 - SPST Normally Open
 - 1.5 Amps @ 240 VAC
- Inputs 1 & 2 can be configured for:
 - General purpose inputs
 - Resetting the trip relay
 - Monitoring the state of the overload relay contacts
- Output A can be energized by the following:
 - Network communications
 - PROFIBUS network Fault
 - Idle network



Enhanced Motor Protection

The E1 Plus PROFIBUS Side Mount Module enhances the motor protection capabilities of the E1 Plus by providing these additional motor protection functions:

- **Jam Protection** – Trip the overload relay when the motor current is greater than the motor's nameplate rating
- **Jam Warning** – Motor current greater than the motor's nameplate rating
- **Overload Warning** – Percentage of the thermal utilization (%TCU)
- **Underload Warning** – Motor current less than a specific level
- **Communication Fault Warning** – Disruption of the communication link
- **Communication Idle Warning** – The network goes into an idle state



E1 Plus PROFIBUS Side Mount Module

- Requires an external 24 VDC Power supply
- Mounts seamlessly to the left side of an E1 Plus
- Provides an economical solution for PROFIBUS communications
- Enhances the functionality of an E1 Plus Overload Relay



LISTEN.
THINK.
SOLVE.®



Bulletin 193/592 E1 Plus PROFIBUS Side Mount Module